

PORTABLE WIRELESS PA SYSTEM

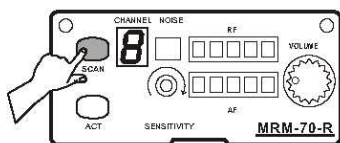
SET-UP RECEIVER AND TRANSMITTER FREQUENCIES (SCAN & SYNC)

AUTOMATIC "RECEIVER" SCAN FREQUENCY SELECTION

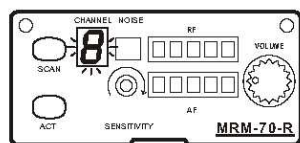
1. POWER "ON" the portable PA



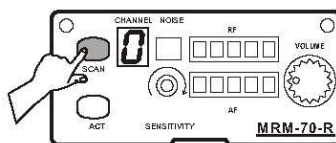
2. POWER on receiver by turning "VOLUME" knob.



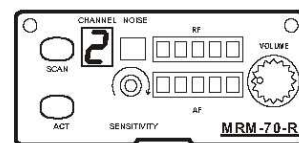
3. Press & hold "SCAN" button for 1 second



4. Existing channel blinks

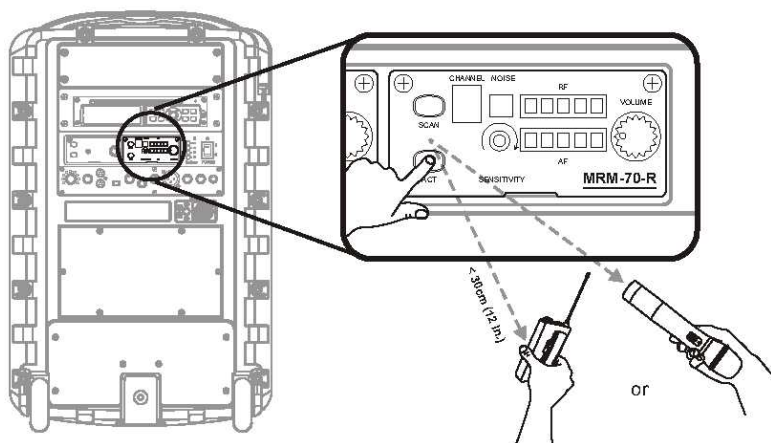


5. Press & release "SCAN" button



6. New interference-free channel appears

AUTOMATIC "TRANSMITTER" SYNC



1. POWER on transmitter (ensure fresh batteries are properly installed with the correct polarity).
2. Locate and bring an ACT transmitter *infrared (IR) port within 30cm (12-inch) of receiver's ACT button.
3. Press and release "ACT" button to synchronize transmitter and receiver frequencies.
4. When the frequencies are synchronized successfully the receiver channel stops flashing and the RF meter is fully lit, the microphone is now ready for use.

NOTE: The transmitter infrared IR port is normally located by a round-shaped red color spot.

